

19 November 2009

By e-lodgement: ASX On-line

Manager Companies
Company Announcements Office
Australian Securities Exchange Limited

Dear Sir/Madam,

Marathon Resources Limited (ASX Code MTN)
Managing Director's Address - Annual General Meeting 2009

I attach a copy of the presentation accompanying the address to be given by Dr Linley at the Company's Annual General Meeting this morning.

Yours faithfully



SM Appleyard
Company Secretary
Enc

09



ANNUAL GENERAL MEETING 2009

Dr John G (Shad) Linley

Director

Marathon Resources

Disclaimer

This presentation has been prepared by Marathon Resources Limited (Marathon) as a presentation of general information about Marathon's activities current at the date of the presentation.

It is prepared in good faith based on Marathon's own information and on data obtained from sources believed to be reliable.

It is provided in summary format and does not purport to be complete. Marathon therefore gives no warranties as to the accuracy, reliability or completeness of the information (except to the extent liability under statute cannot be excluded).

Certain statements in this presentation may constitute forward-looking statements. Such statements are inherently subject to uncertainties as they may be affected by a variety of known and unknown risks, variables and other factors which could cause actual values or results, performance or achievements to differ materially from anticipated results, implied values, performance or achievements expressed, projected or implied in the statements. Marathon gives no assurance that the anticipated results, values, performance or achievements expressed or implied in those forward-looking statements (if any) will be achieved.

The presentation is general in nature and is not intended as financial advice or an investment recommendation. Persons should obtain their own specific investment advice in respect of their particular needs, objectives and financial circumstances.

The presentation is proprietary to Marathon and is not to be used for any other purpose without Marathon's prior written consent.

Information in this presentation relating to:

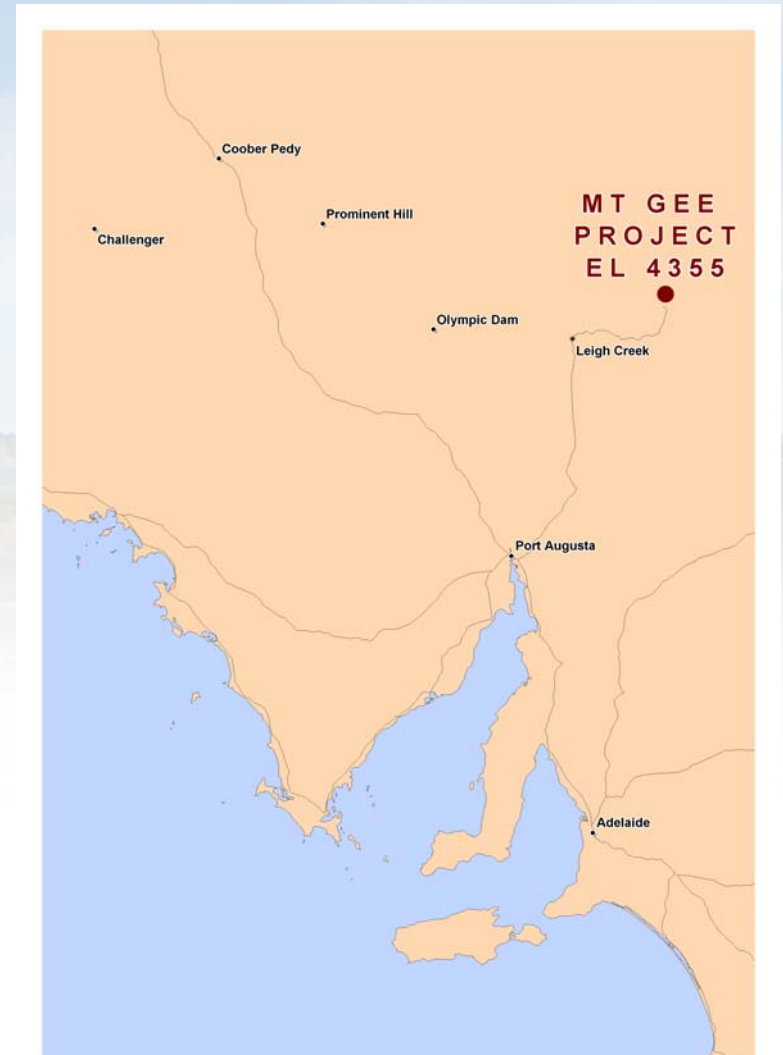
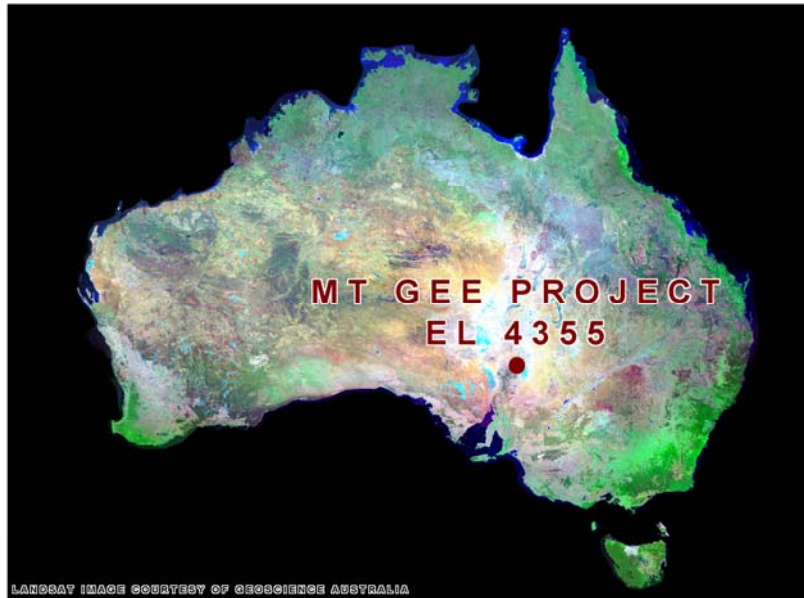
Exploration Results have been compiled by Mr Brenton Newell B.App.Sc., Grad Dip App.Geol (SAIT), a part-time employee of Marathon Resources Ltd and a Member of the Australian Institute of Geoscientists and Dr Phung Nguyen B.Sc (Hons), PhD (Uni.WA.), a part-time employee of Marathon Resources Limited, and a Member of the AusIMM.

The Mt Gee Mineral Resource Estimate was based on information compiled on behalf of Marathon by Tony Marshall B.Sc (Hons) Uni.Melb., a Member of the AusIMM. At the relevant time, Tony Marshall was Principal Geologist with SMGC and a full-time employee of that company.

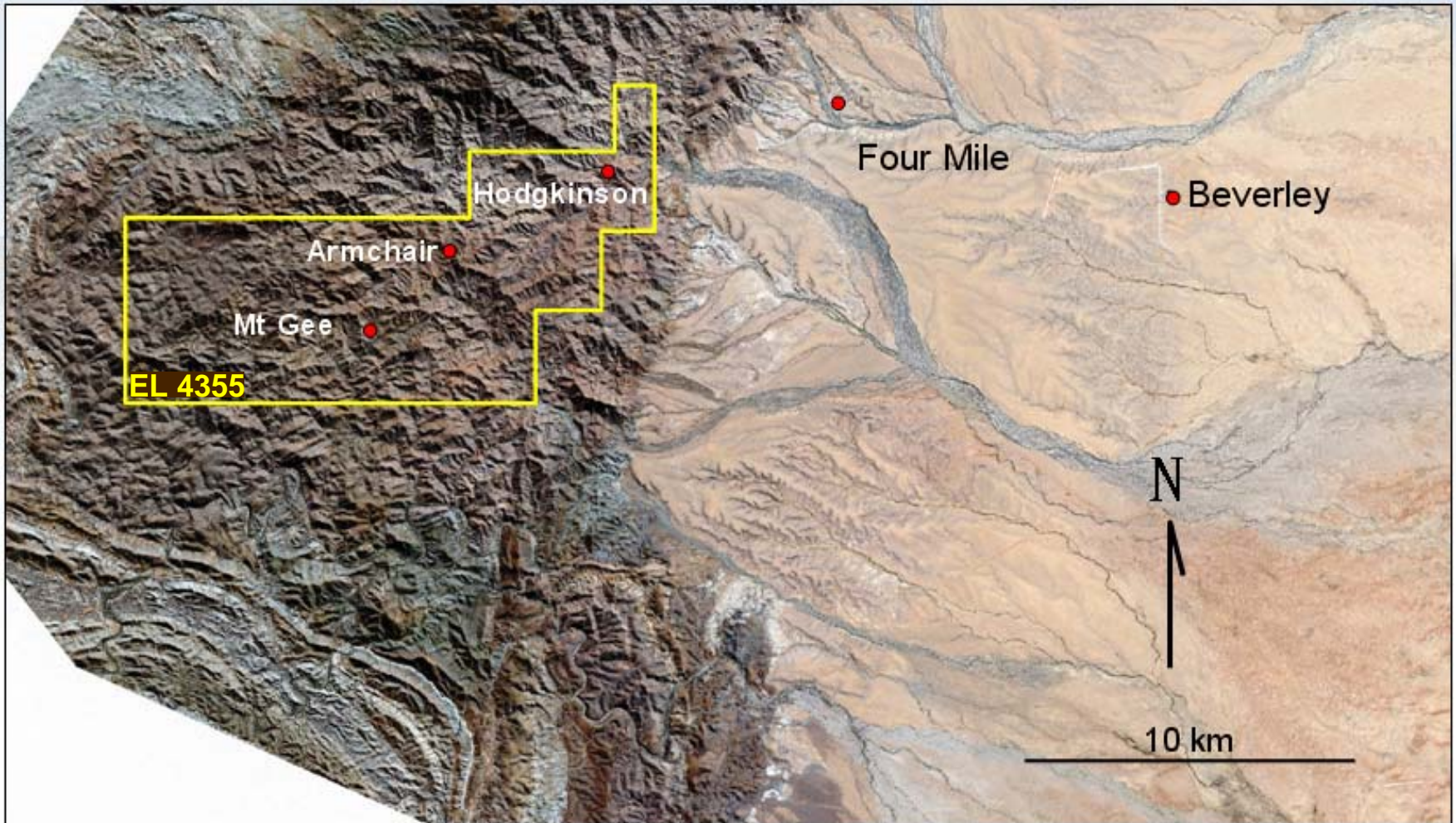
Dr Nguyen and Messrs Newell and Marshall respectively have sufficient experience relevant to the style of mineralization and type of deposit under consideration, and to the activity which each is undertaking, to each qualify as a Competent Person as defined in the 2004 edition of the "Australasian Code for Reporting of Exploration Results, Mineral Resources and Ore Reserves". Dr Nguyen and Messrs Newell and Marshall respectively consent to the inclusion in this release of the statements based on the information in the form and context appearing.



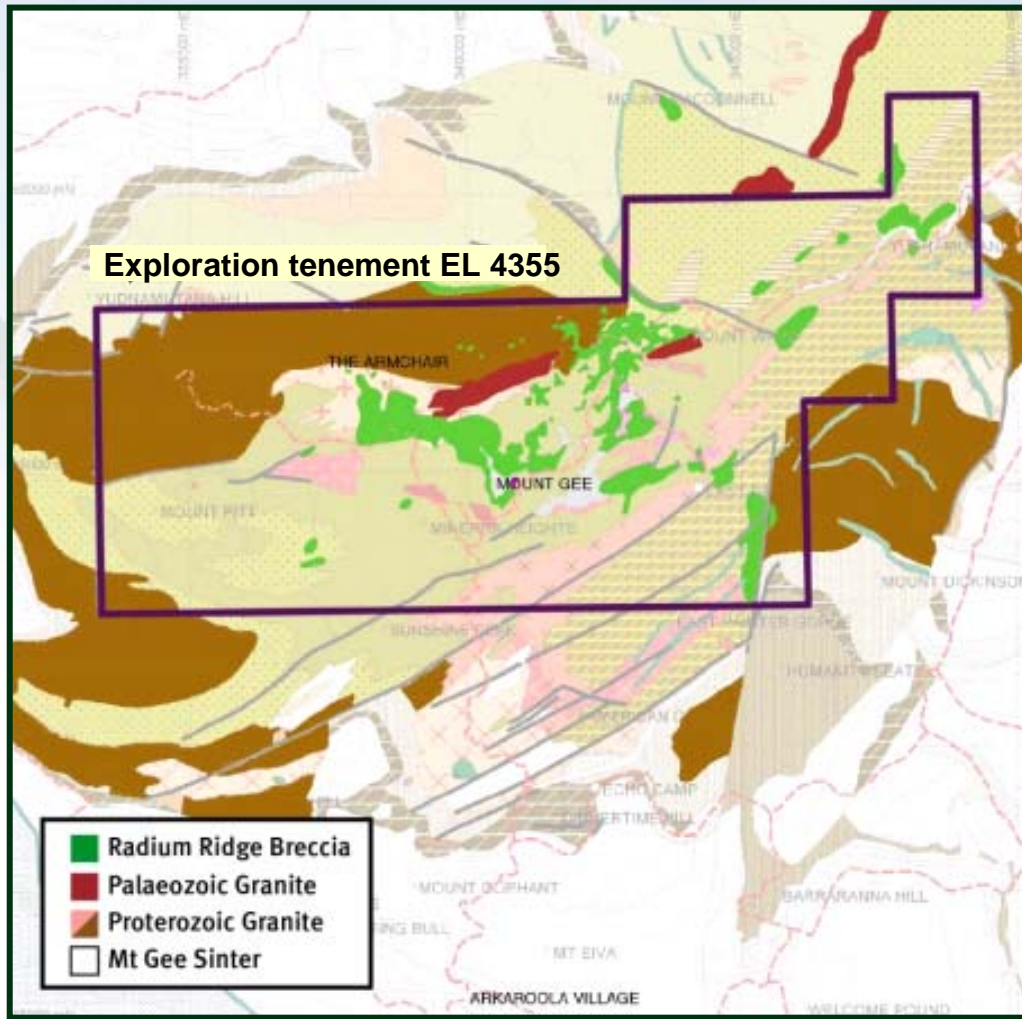
Location of Mt Gee Project EL4355



Key deposits



EL4355 and Regional Geology



The importance of EL 4355

- Mt Gee deposit is the 5th largest undeveloped uranium deposit in Australia and is open to the northeast, east and southeast
- The Armchair deposit is “open” on strike and down dip
- Hodgkinson deposit is a small but high grade and “open” at depth
- A new geological exploration model has identified mineralised zones that need to be drilled



Mt Gee Ore Resource Table*

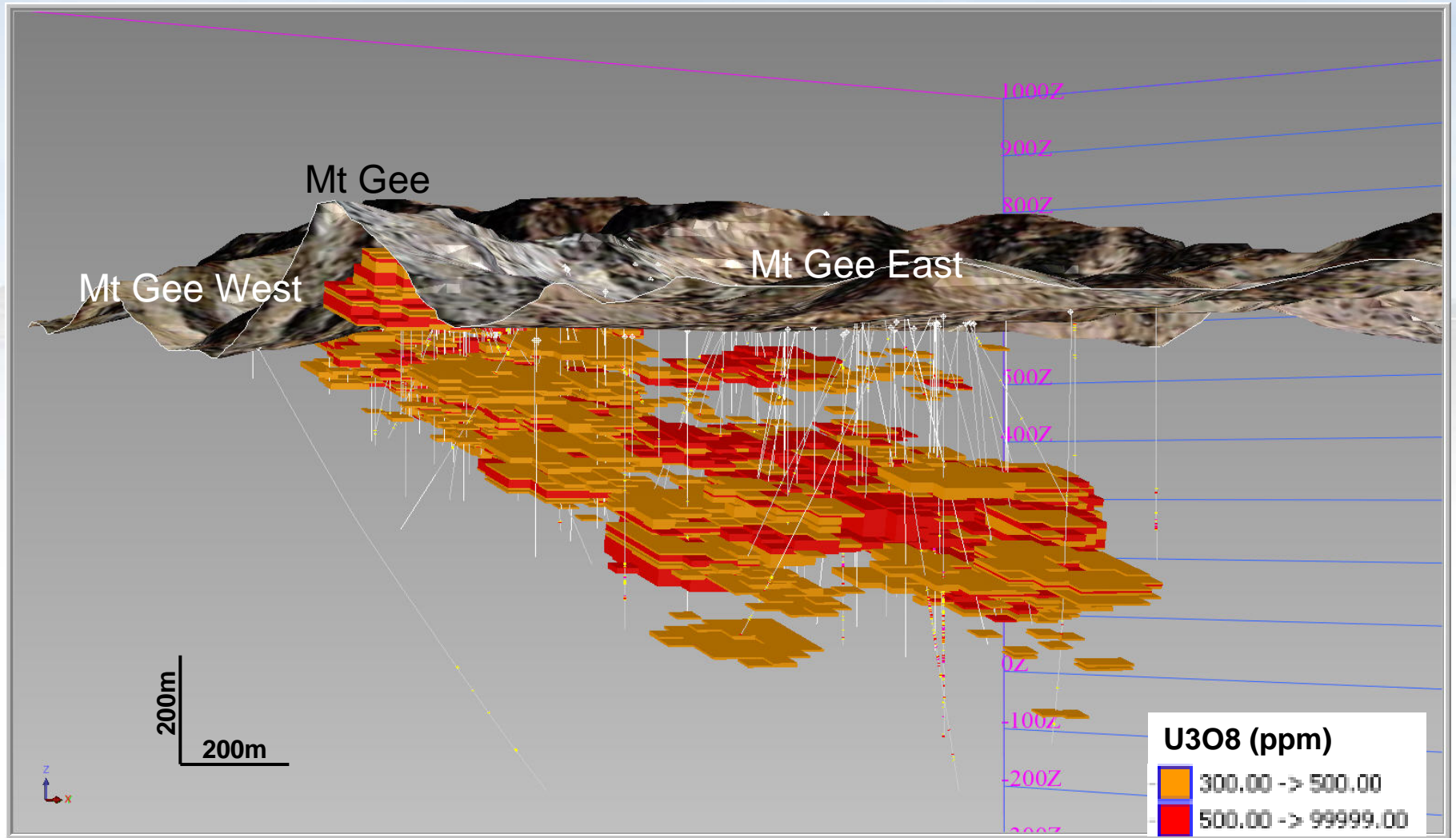
- Since 2005, Marathon Resources have drilled 45 diamond holes and 75 RC holes

Year	Category	Tonnes (Mt)	Grade U3O8 (ppm)	Tonnes U3O8 kt
2007	Indicated	3.1	717	2.2
	Inferred	39.7	622	24.7
	Total	42.8	629	26.9
2008	Indicated	4	706	2.8
	Inferred	47	607	28.5
	Total	51	615	31.3

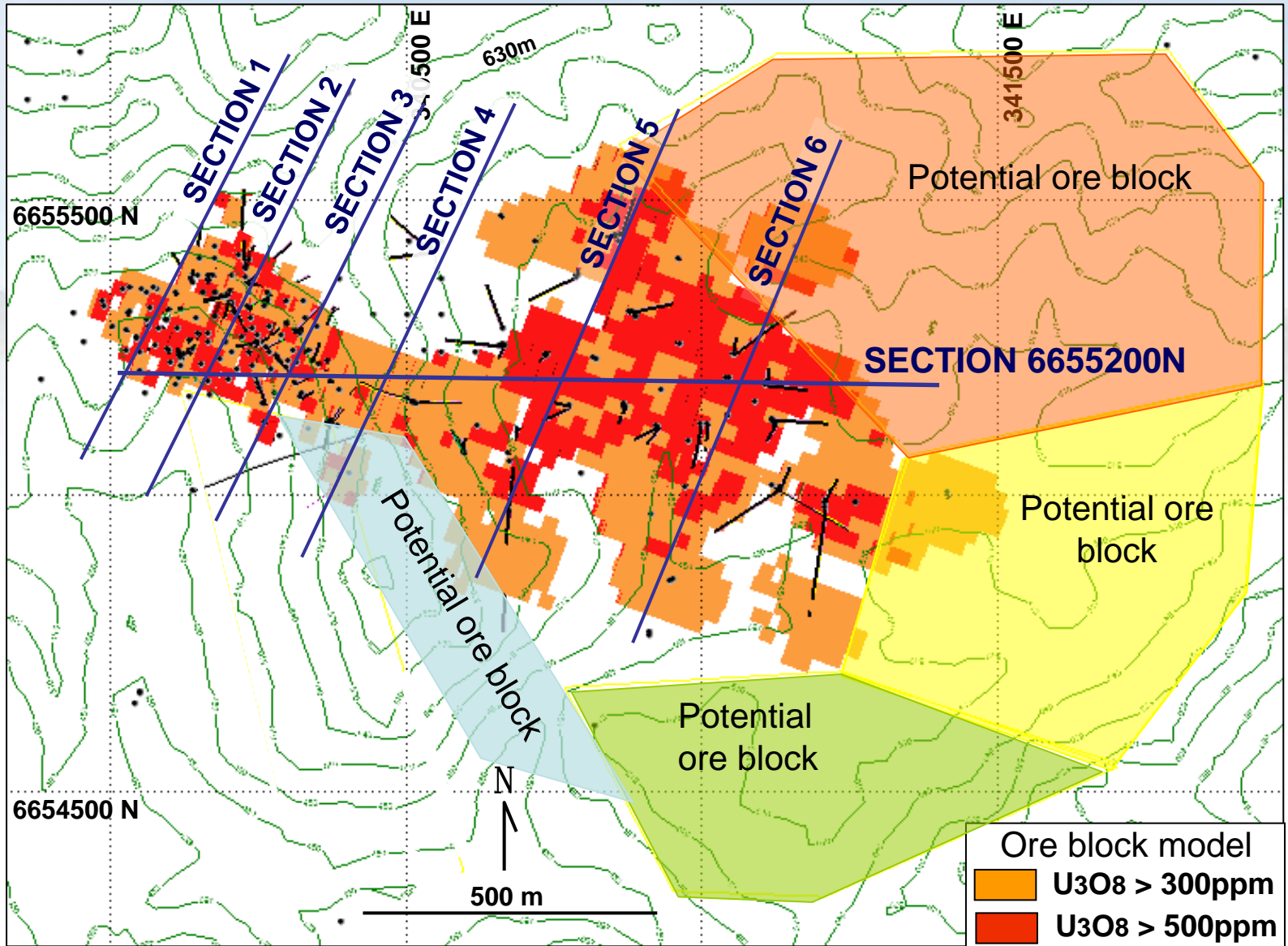
* at 300 ppm U3O8 cutoff
 Note: 31.3 Kt = 69,000,000lbs



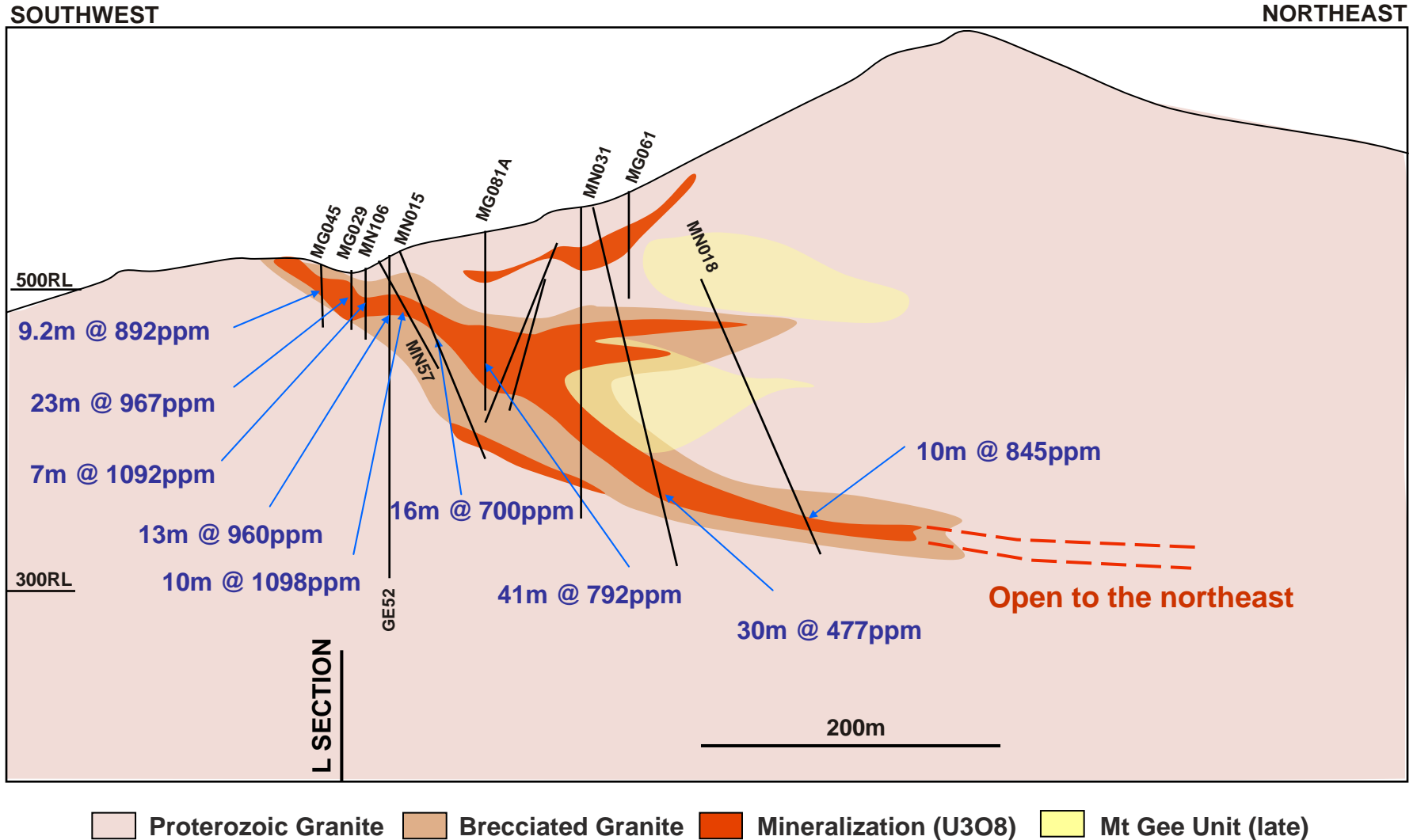
Ore Block Model – Looking Northwest



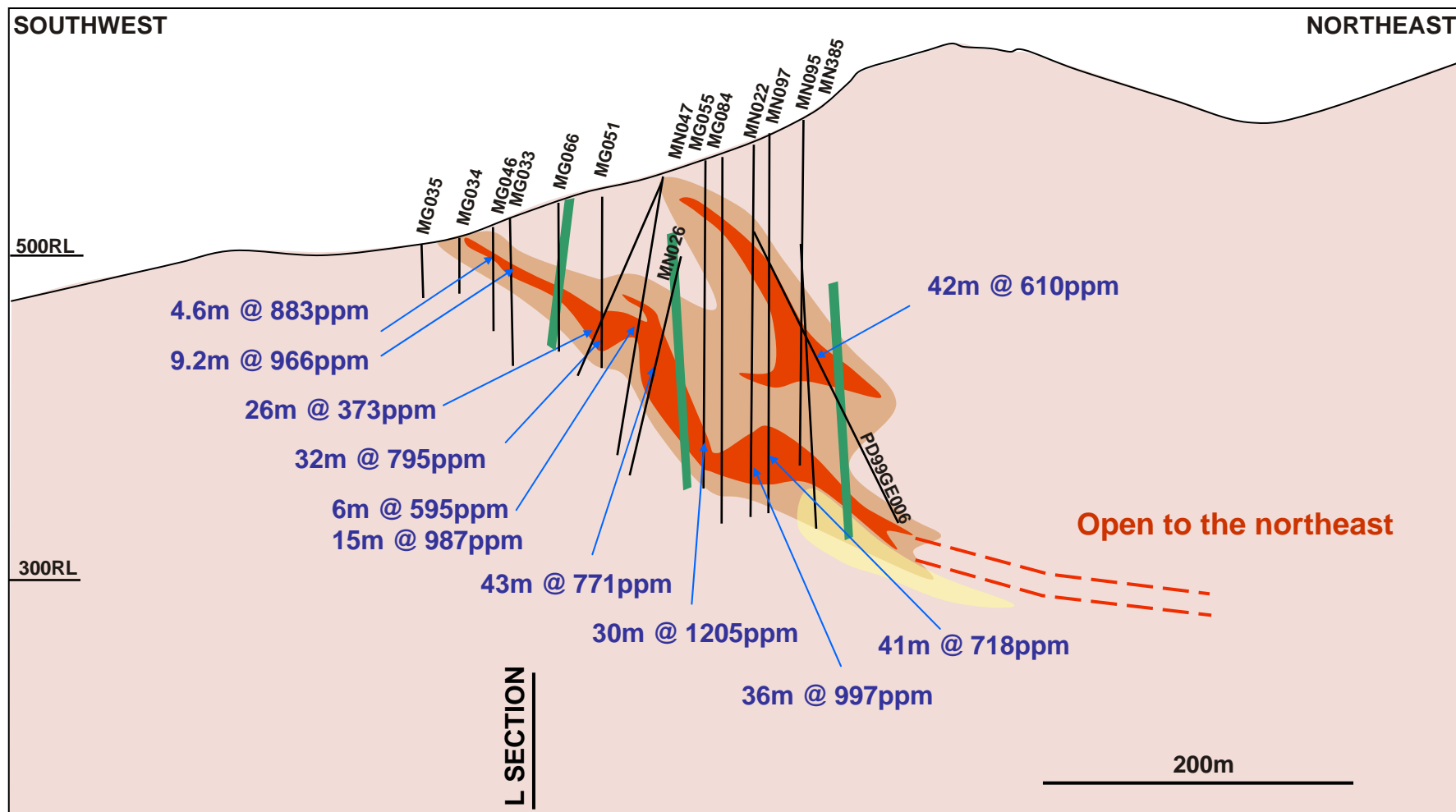
Mt Gee Resource Extension Potential



Mt Gee Cross Section 1

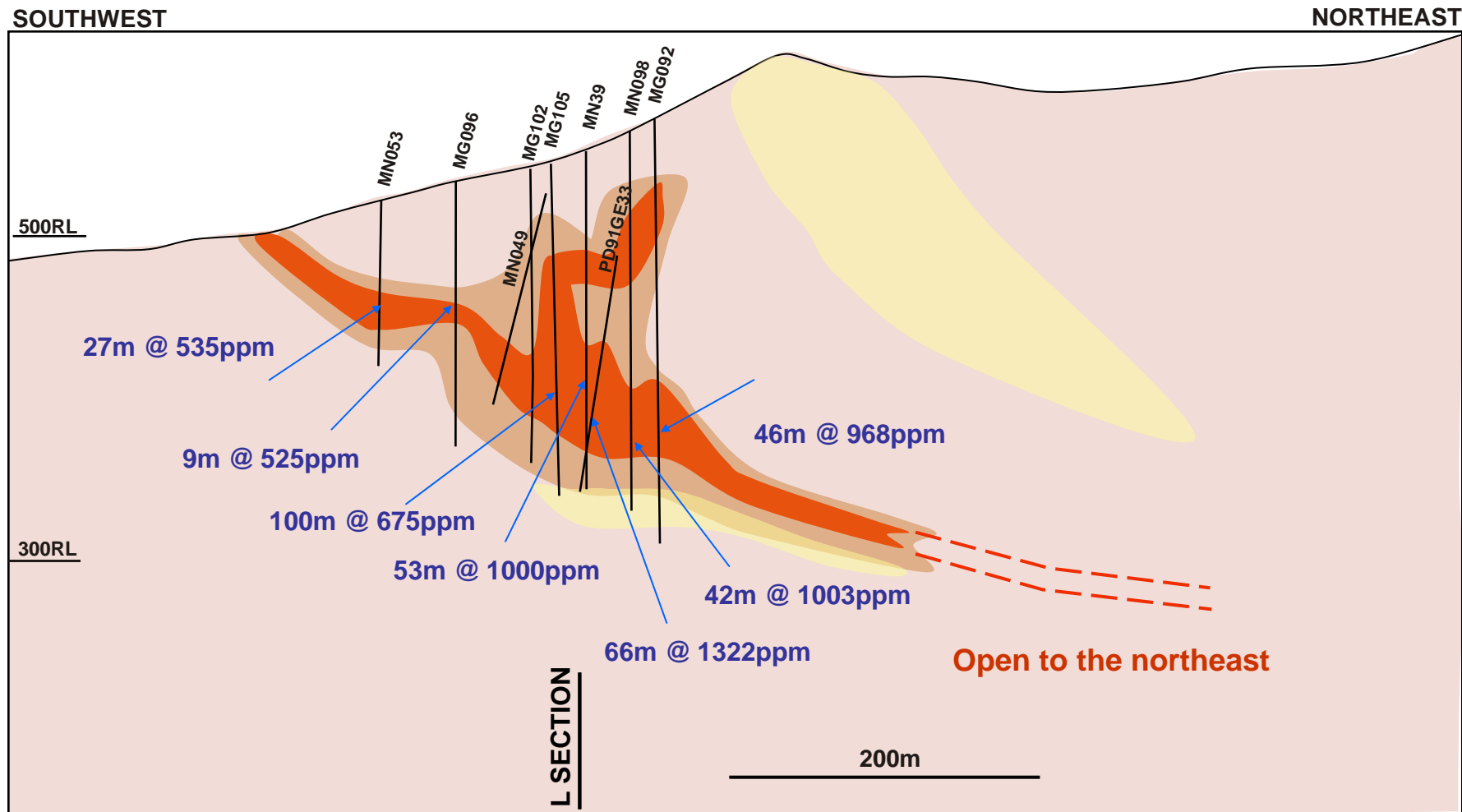


Mt Gee Cross Section 2



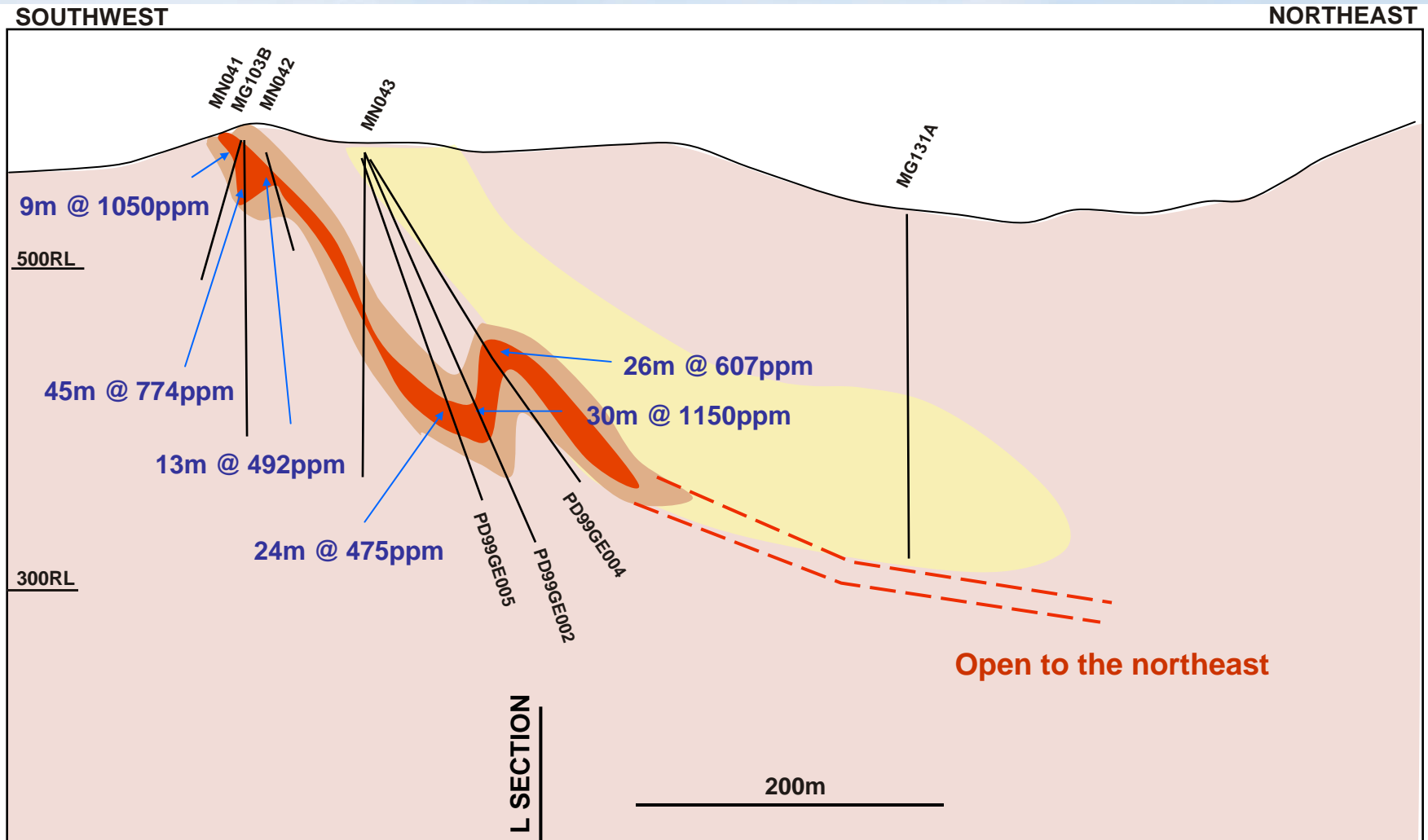
Proterozoic Granite
 Brecciated Granite
 Mineralization (U3O8)
 Mt Gee Unit
 Pebble dyke

Mt Gee Cross Section 3



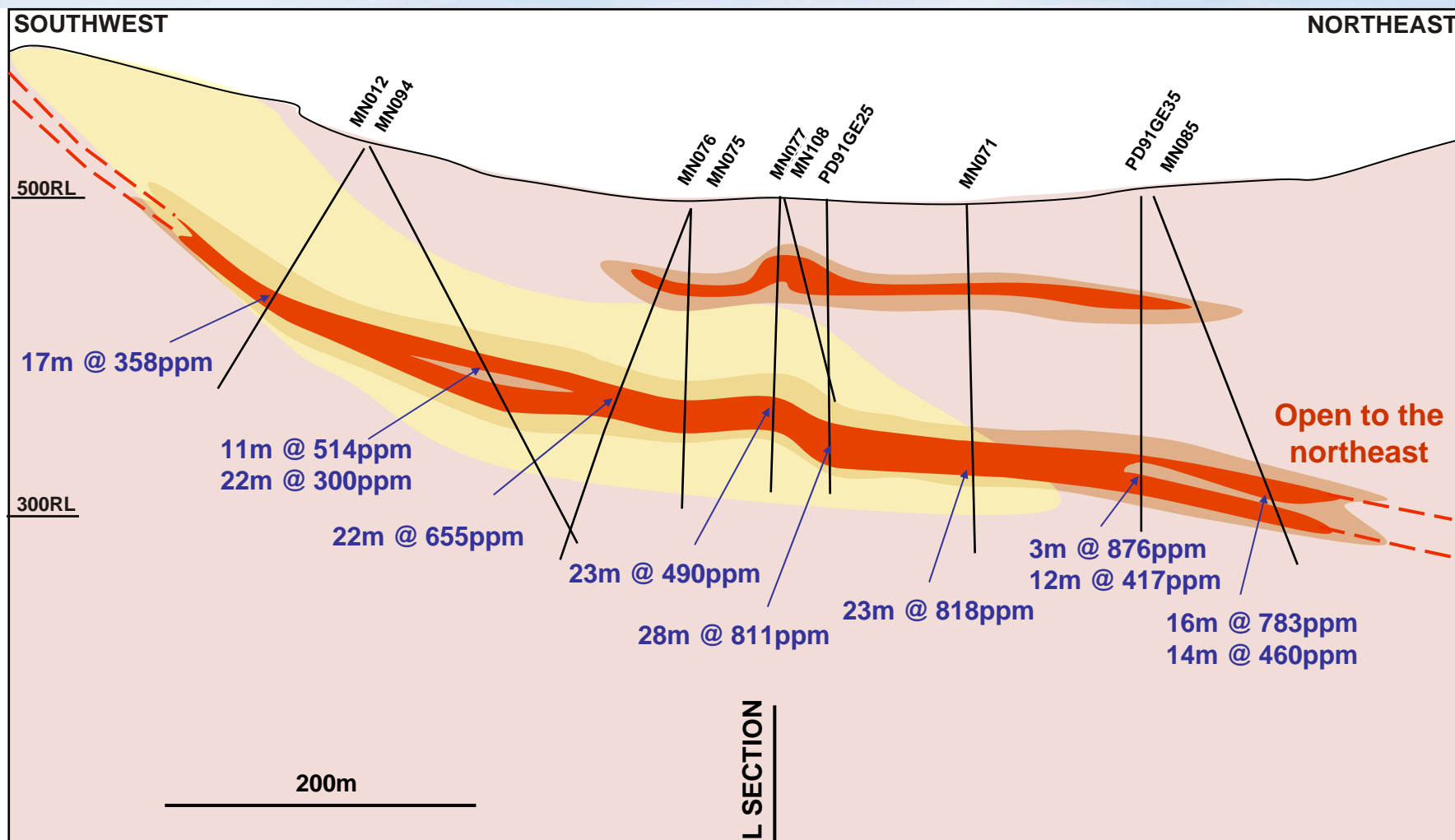
Proterozoic Granite
 Brecciated Granite
 Mineralization (U3O8)
 Mt Gee Unit (late)

Mt Gee Cross Section 4



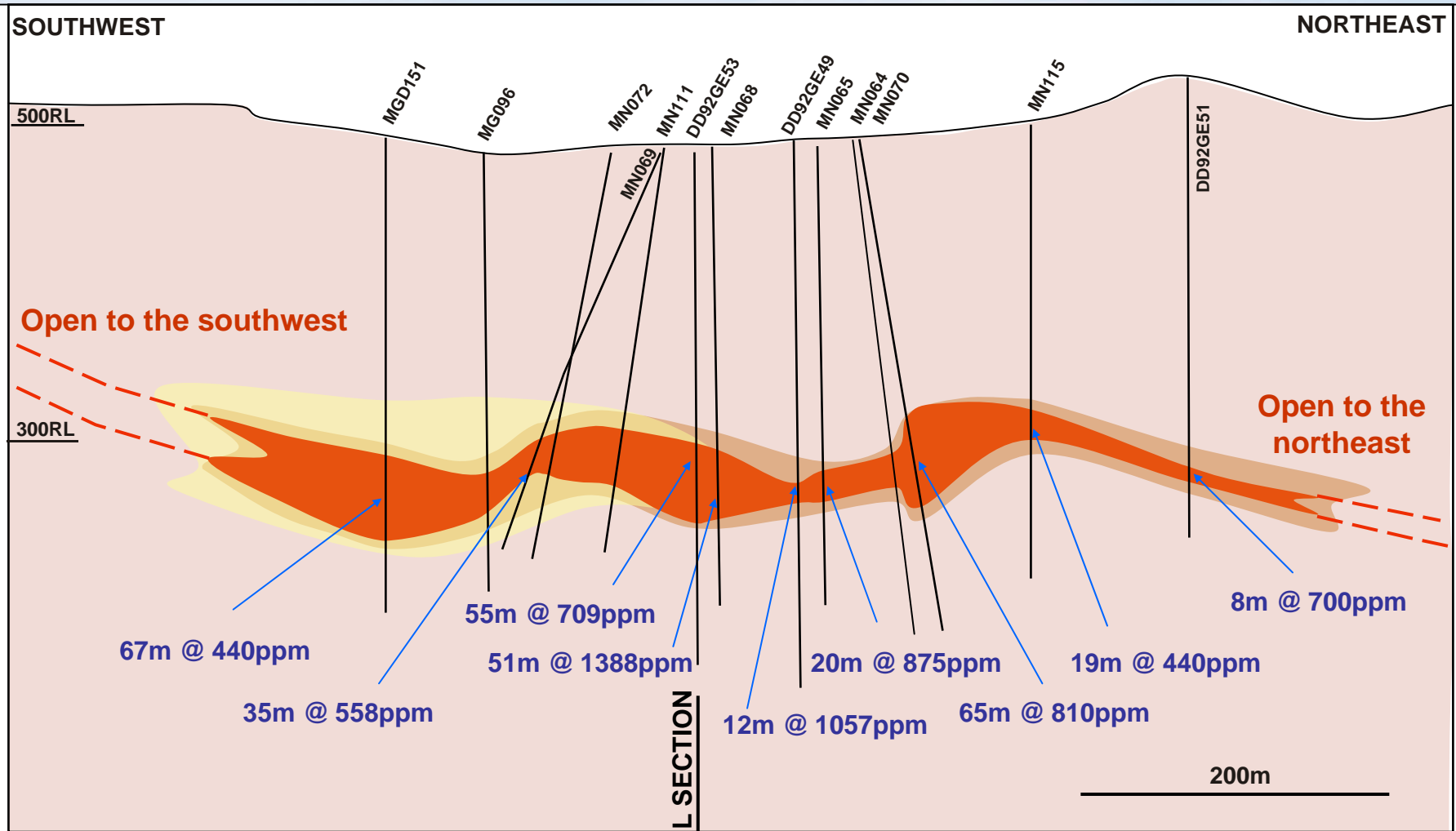
Proterozoic Granite
 Brecciated Granite
 Mineralization (U3O8)
 Mt Gee Unit (late)

Mt Gee Cross Section 5



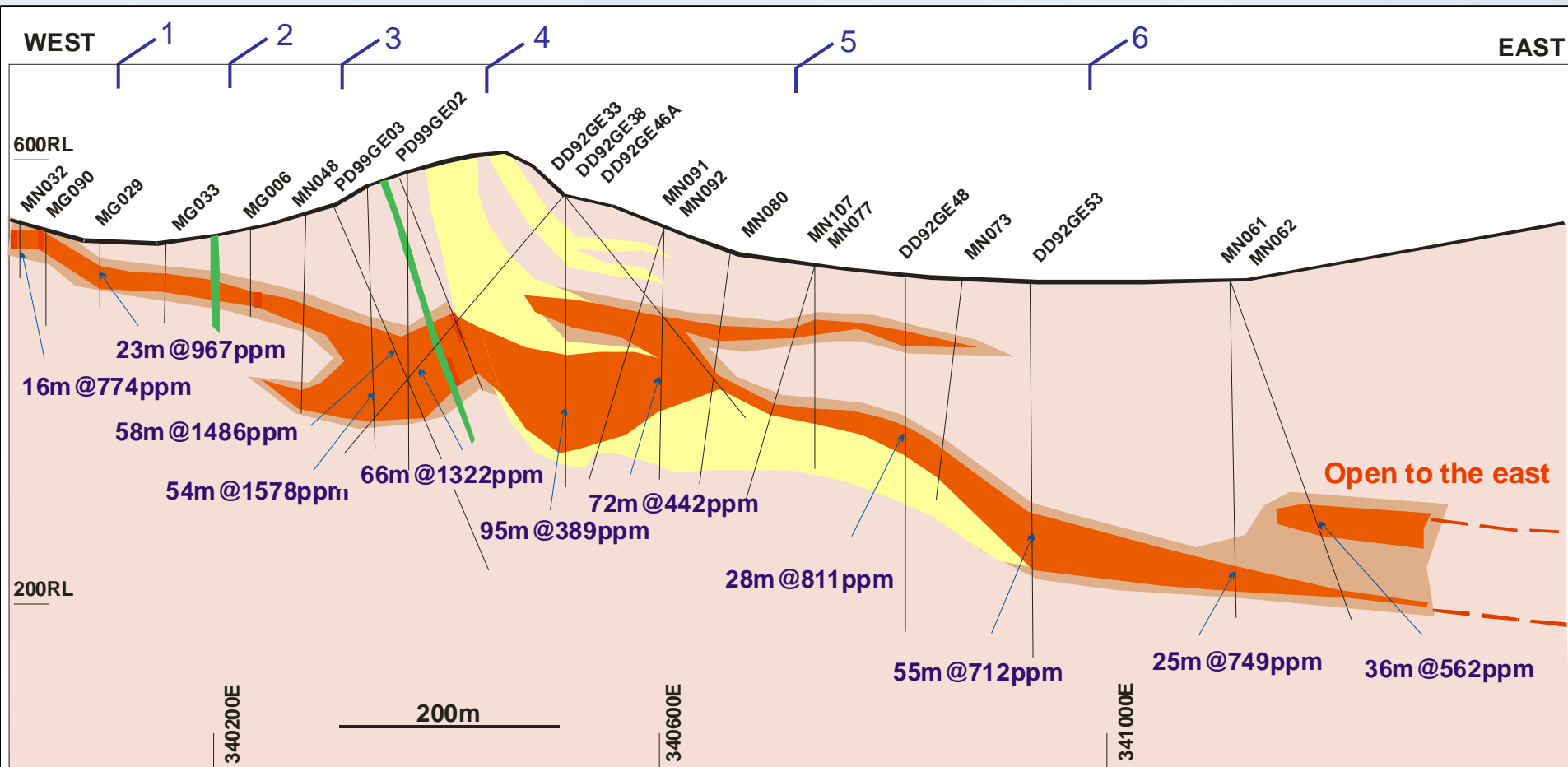
Proterozoic Granite
 Brecciated Granite
 Mineralization (U3O8)
 Mt Gee Unit (late)

Mt Gee Cross Section 6



Proterozoic Granite
 Brecciated Granite
 Mineralization (U3O8)
 Mt Gee Unit (late)

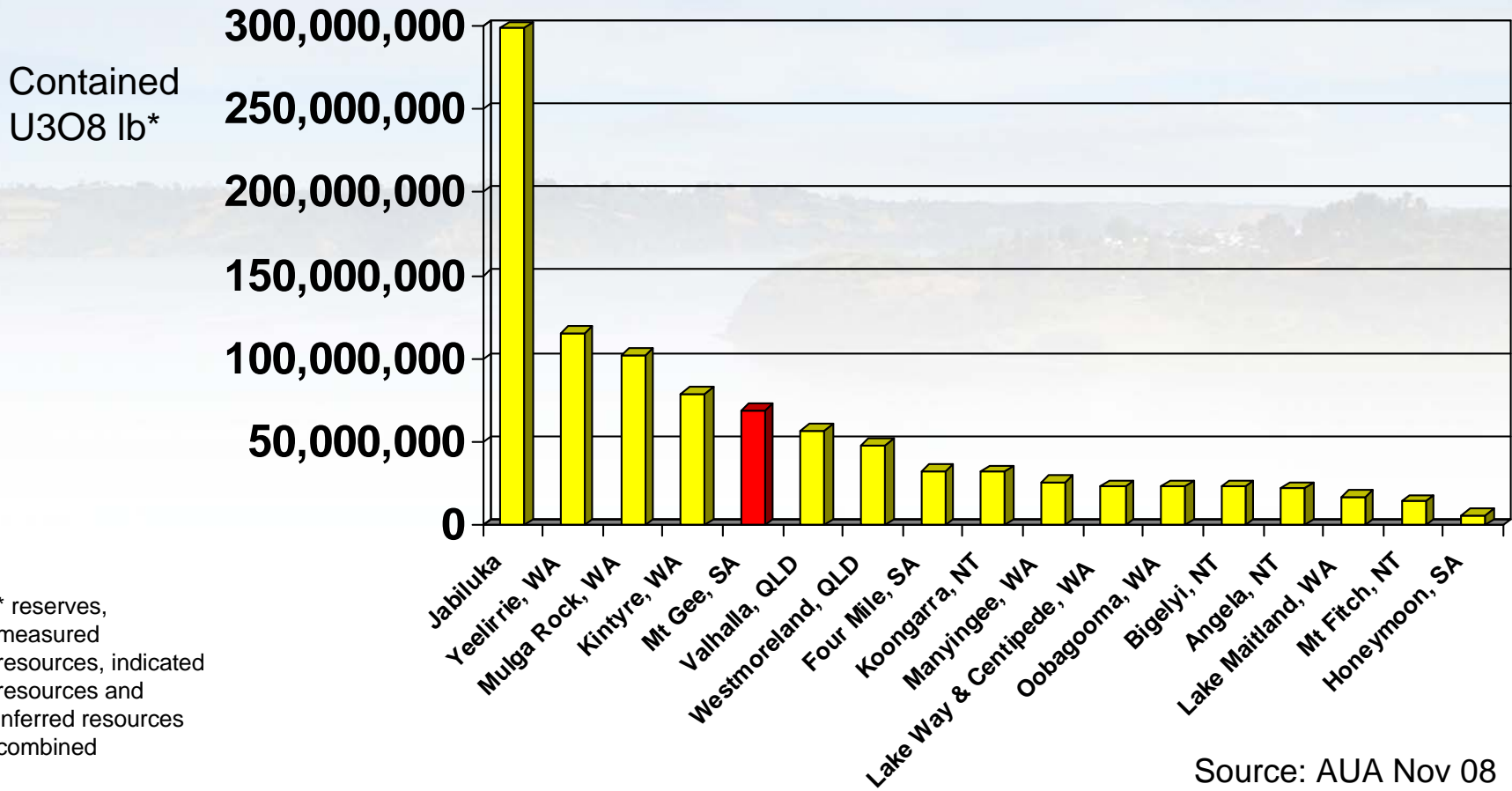
Mt Gee Long Section 6655200N



- Proterozoic Granite
- Hematite Breccia
- Mineralization (U3O8)
- Mt Gee Unit
- Pebble dyke

Australian Uranium Deposits & Prospective Mines

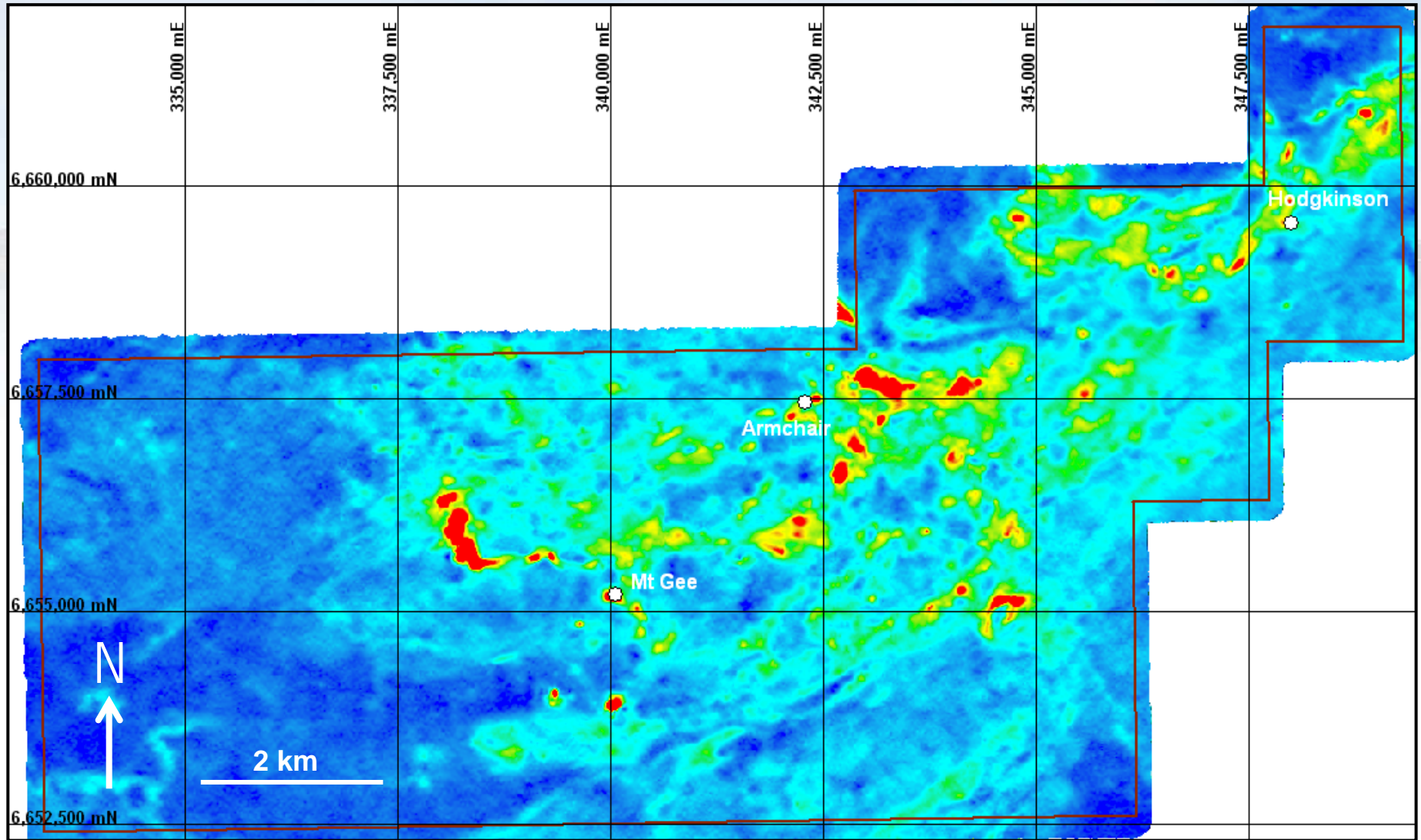
Mt Gee *current*



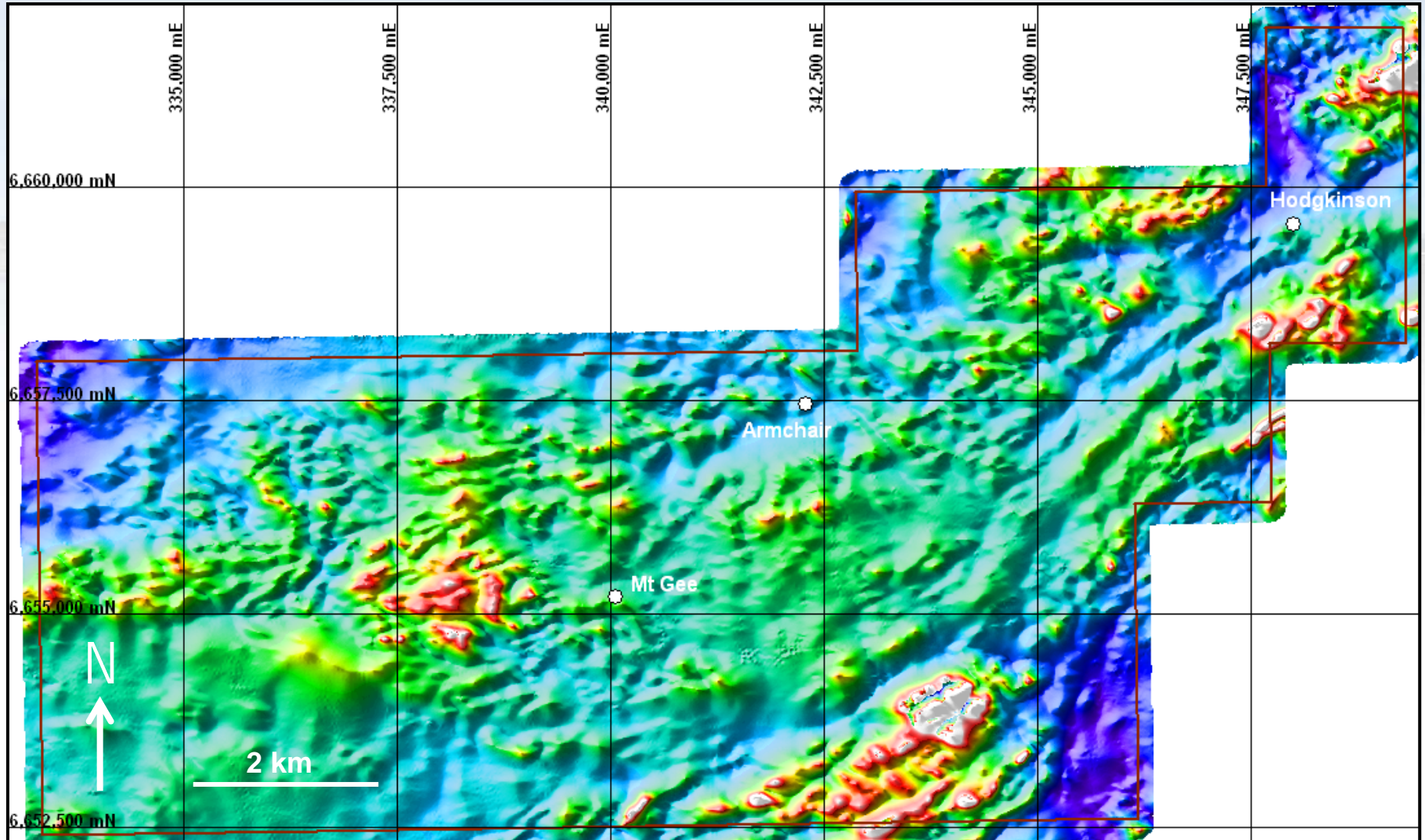
Heli Magnetic and Radiometric survey



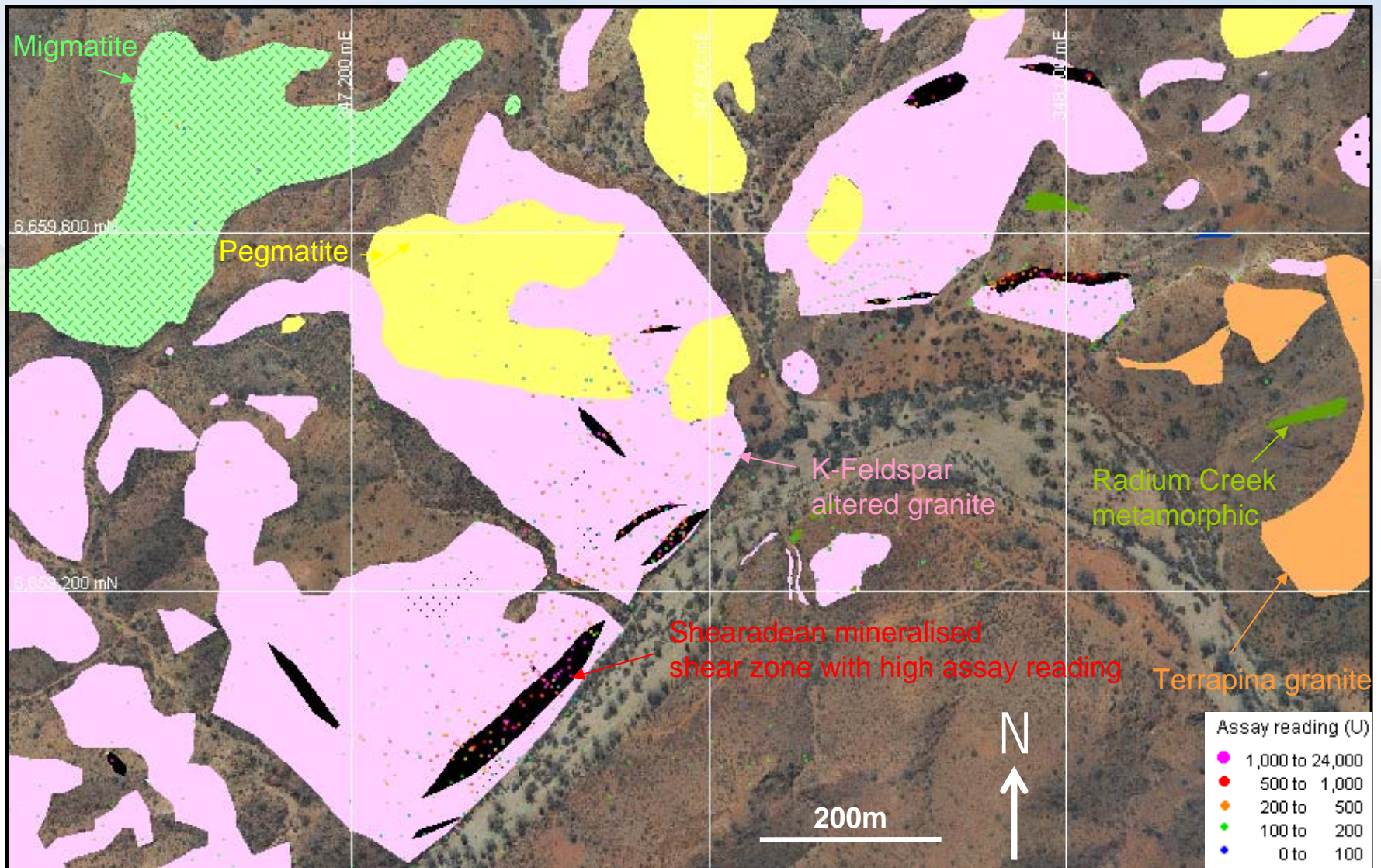
Mt Gee Radiometric Survey 2009 (U)



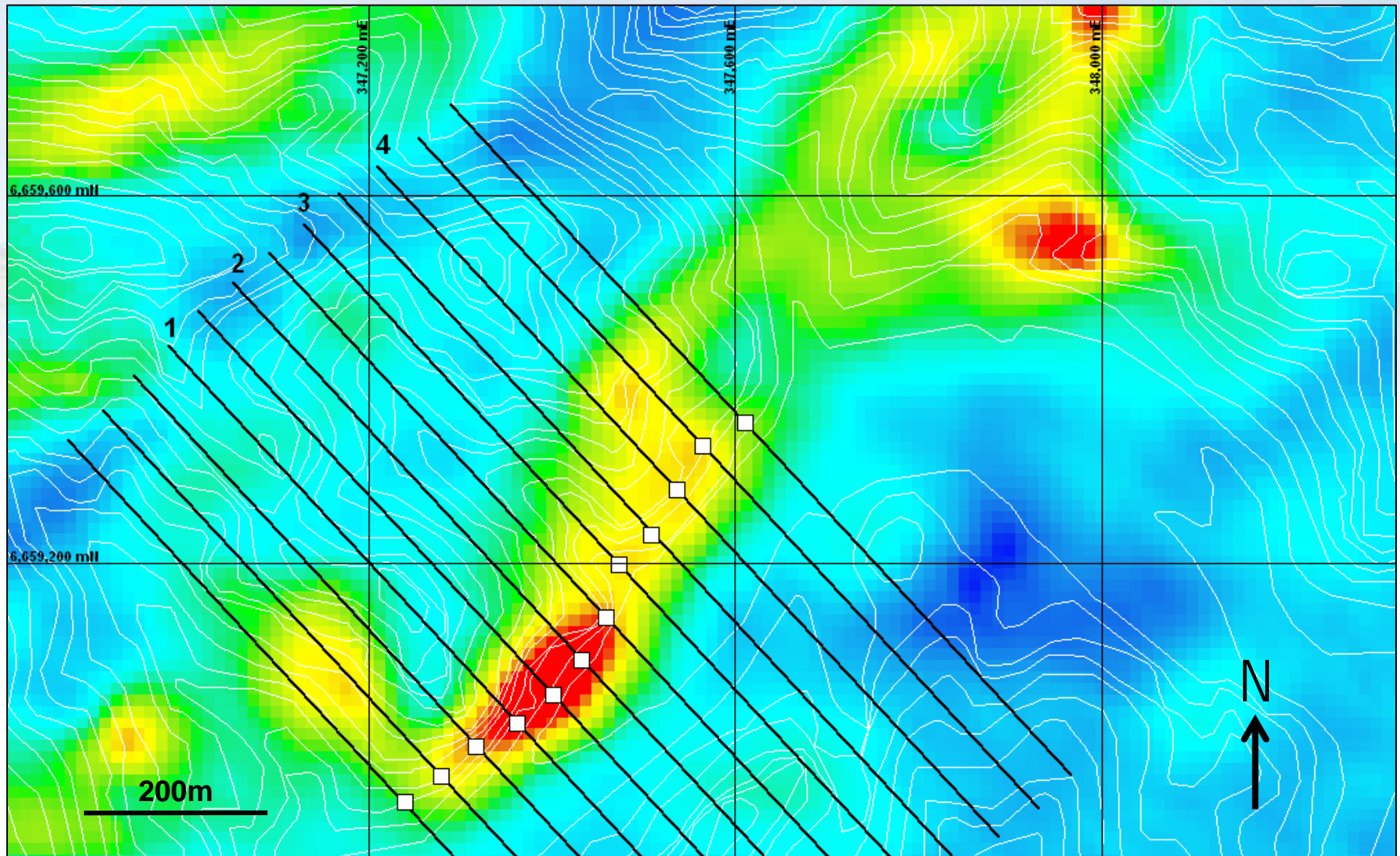
Mt Gee Magnetic Survey 2009



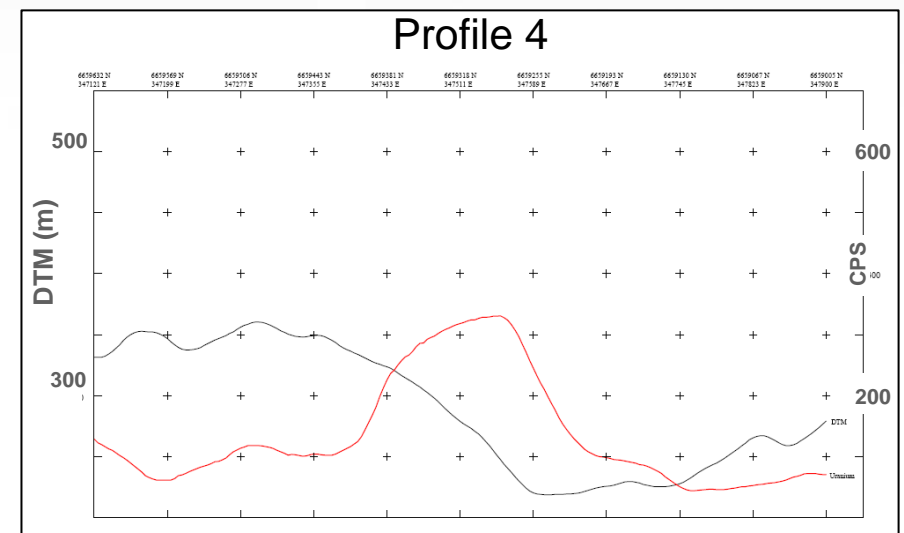
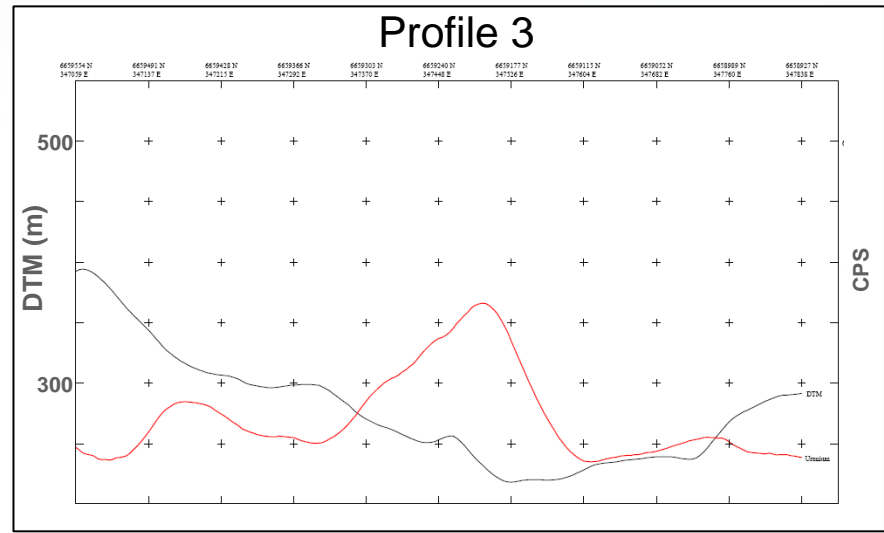
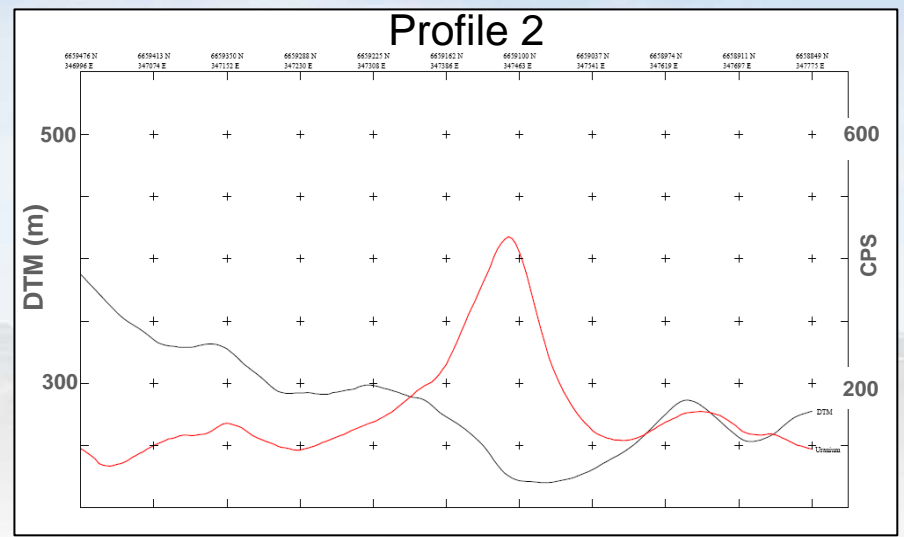
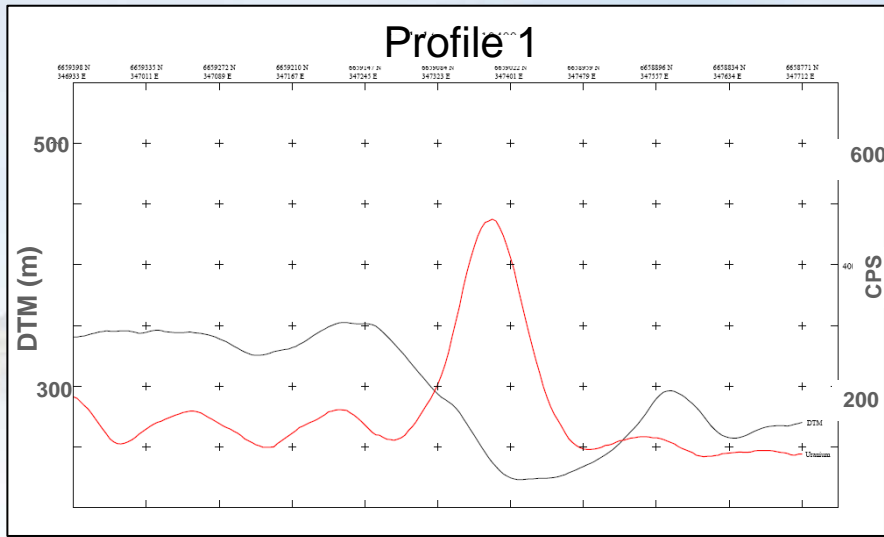
SHEARADEAN MAPPING AREA



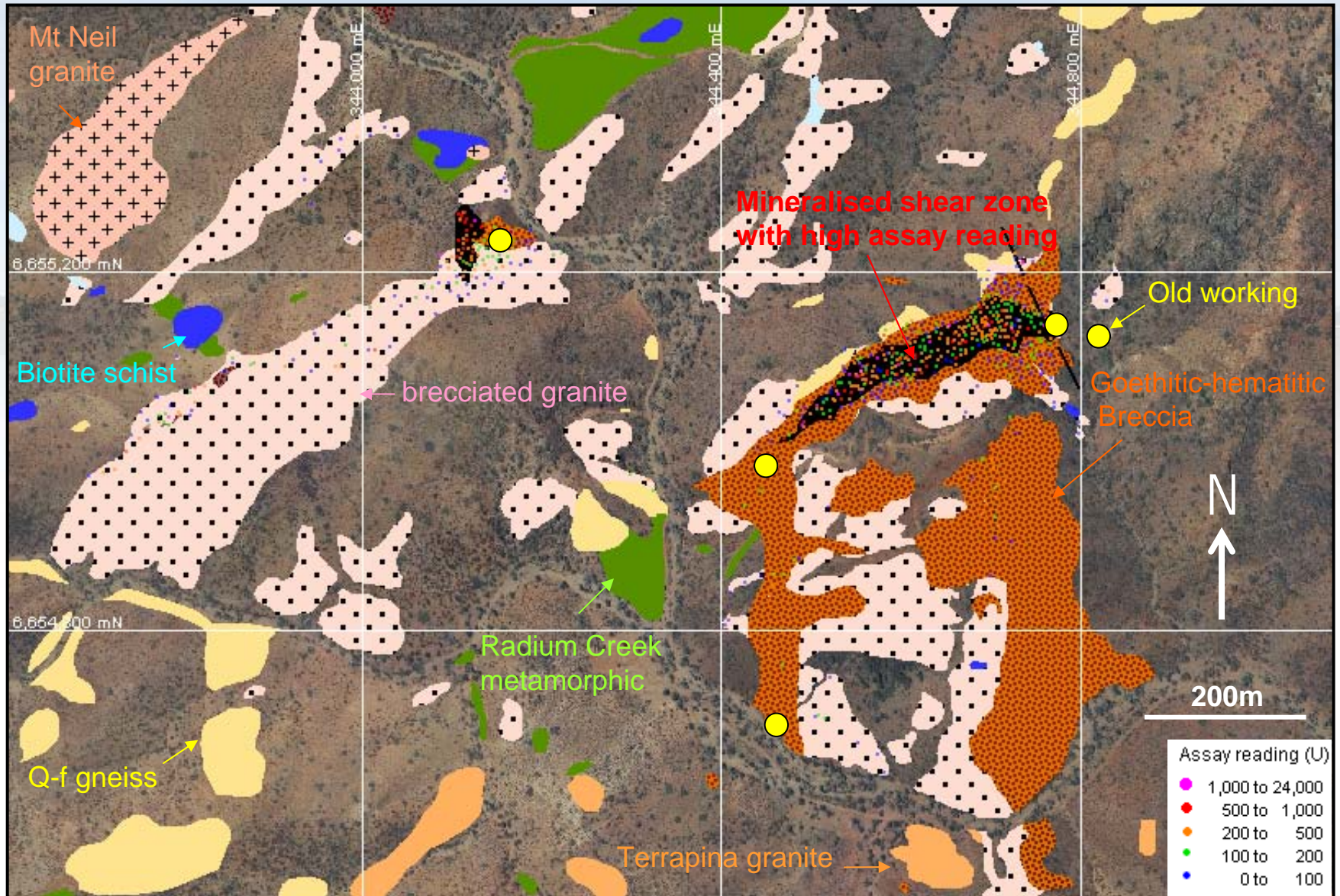
SHEARADEAN PROSPECT (URANIUM) WITH STACKED PROFILES



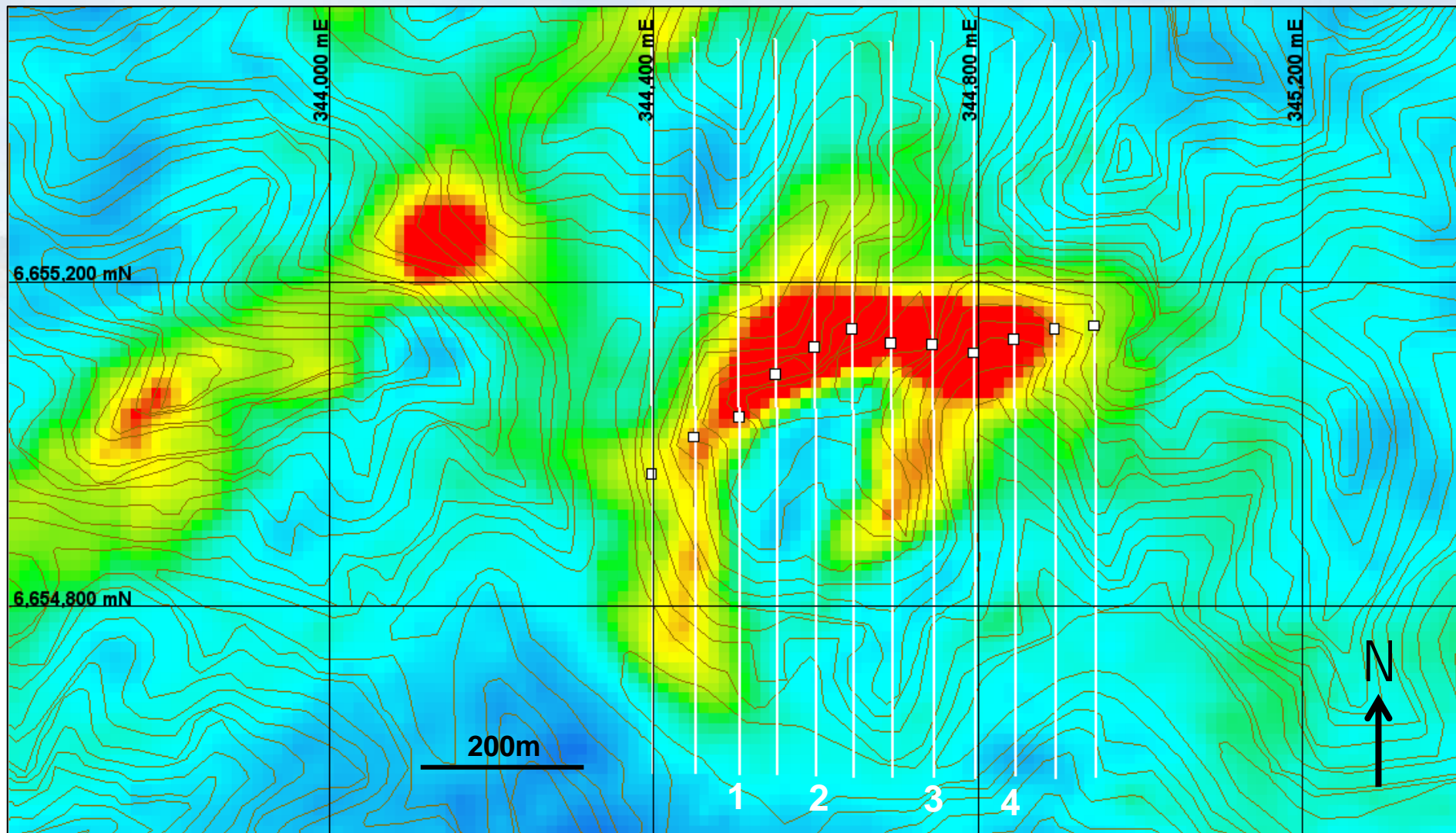
SHEARADEAN STACKED PROFILES



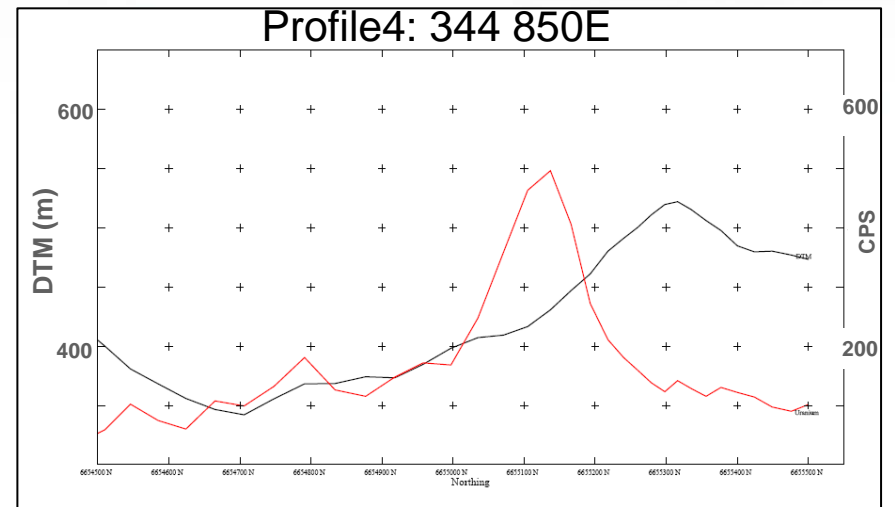
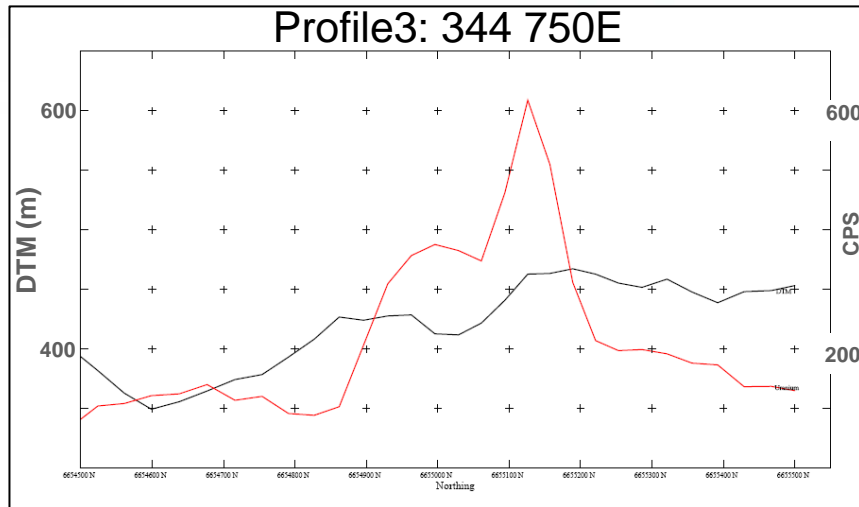
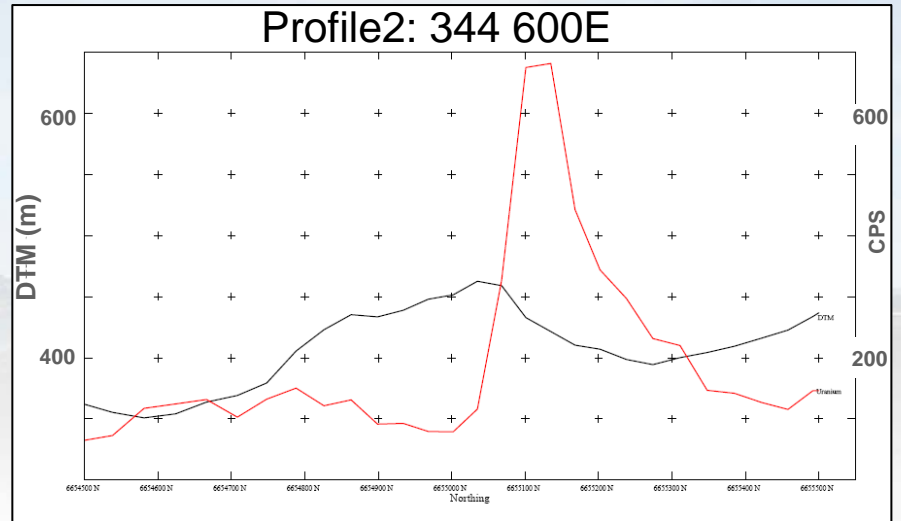
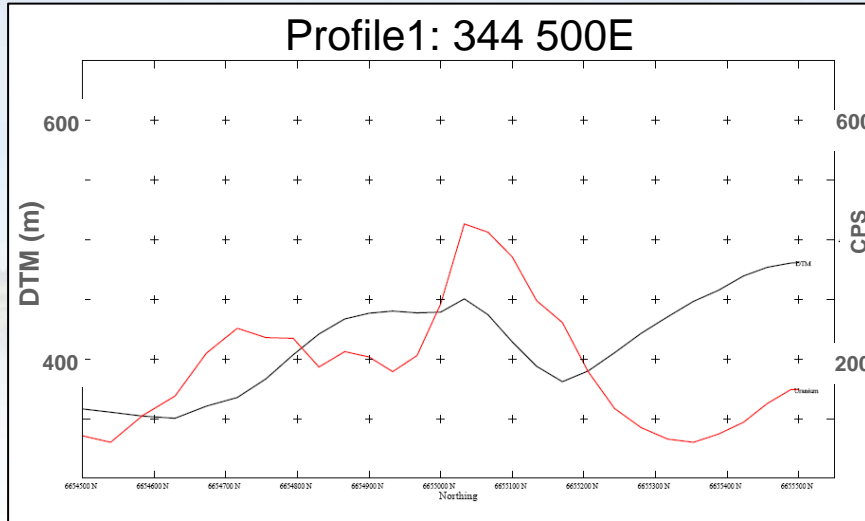
SHEARDAVA MAPPING AREA



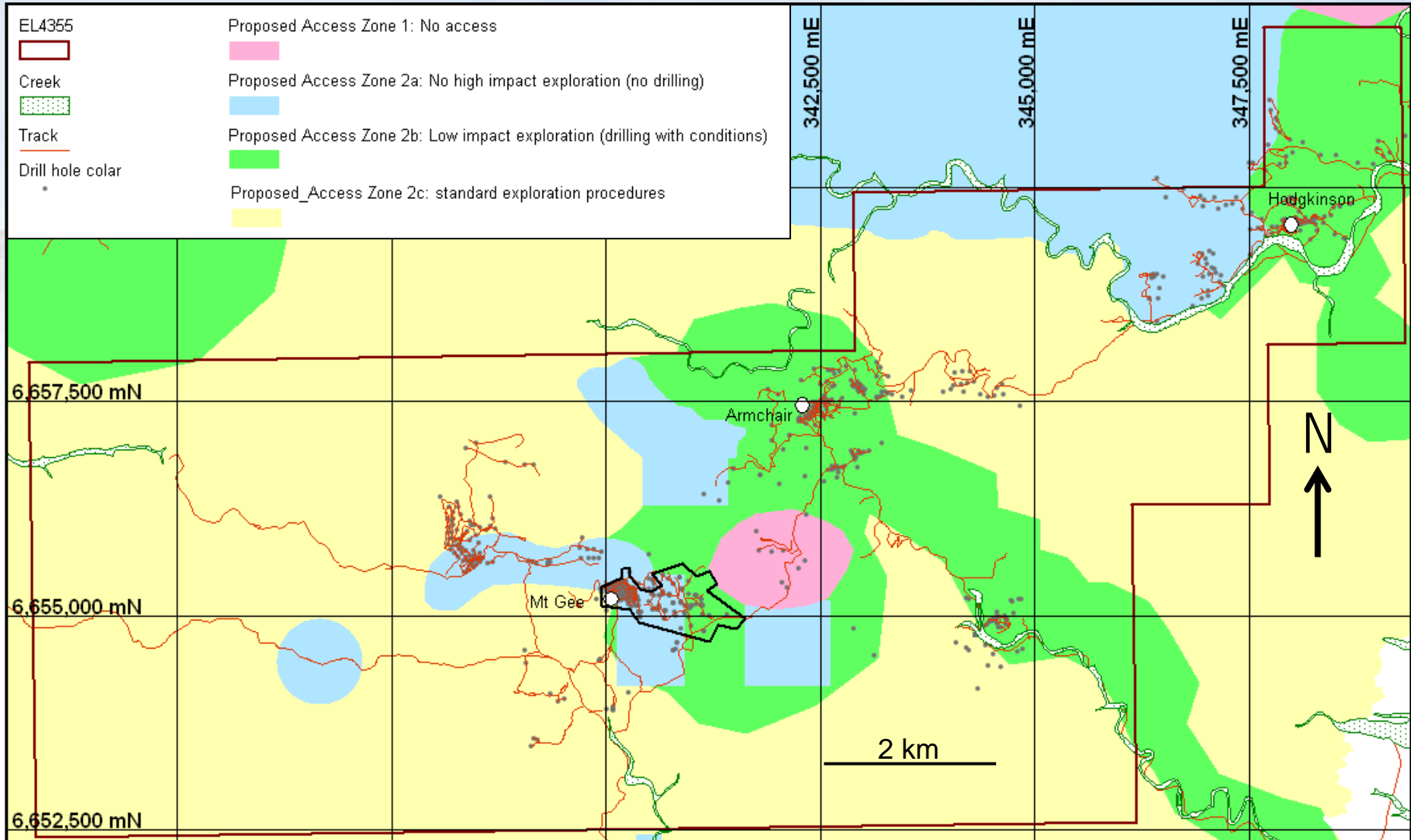
SHEARDAVA PROSPECT (URANIUM) WITH STACKED PROFILES



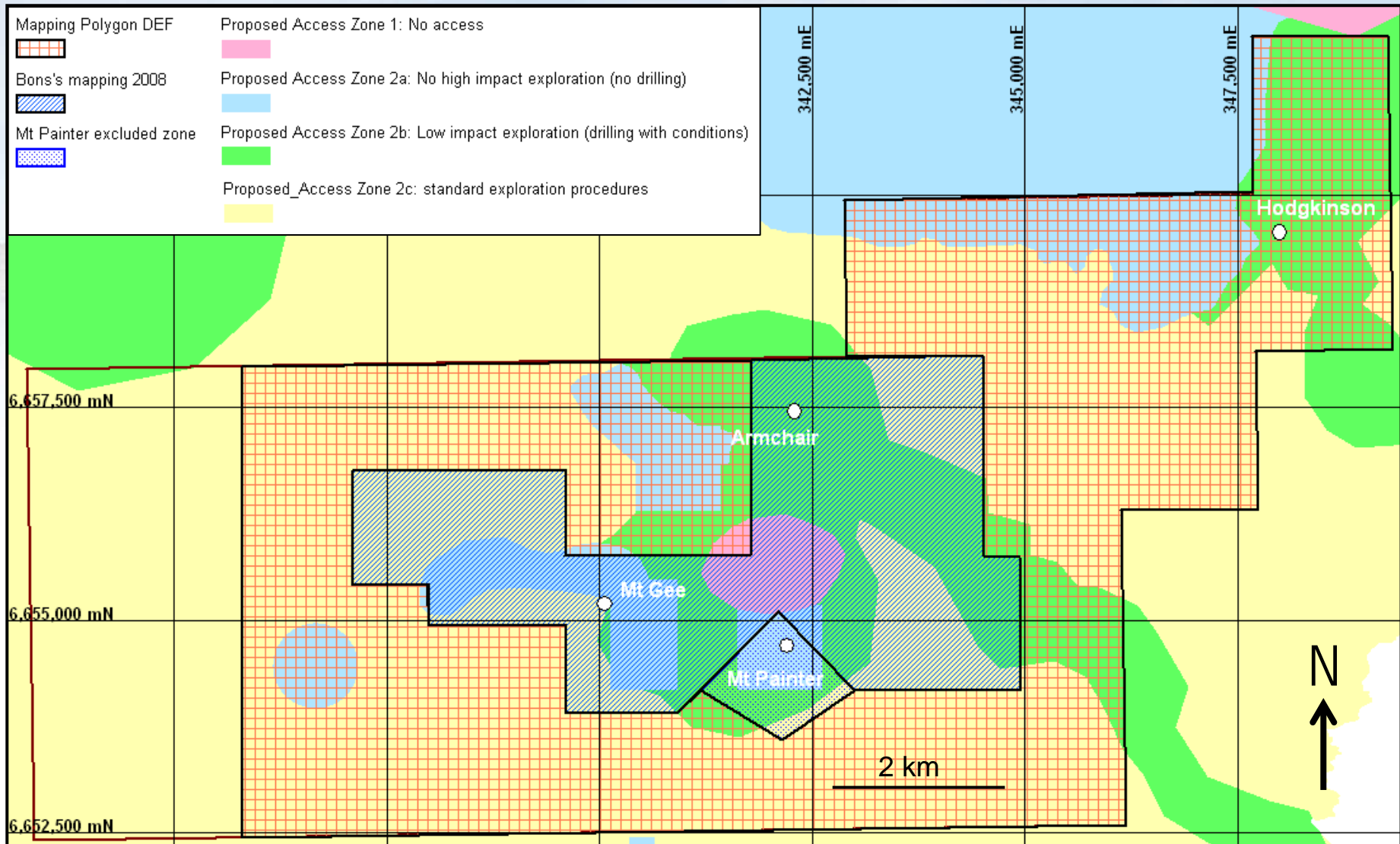
SHEARDAVA STACKED PROFILES



Proposed Management Zones



Field program for 2009-2010



Marathon Resources

Office: 235 Port Road, Hindmarsh SA 5007, Australia

Postal: PO Box 566, Hindmarsh SA 5007, Australia

Tel: +61(0)8 8348 3500

Fax: +61(0)8 8346 8111

www.marathonresources.com.au